

# Mobile track measurement and maintenance management

## Surveying and evaluation of tracks

### terra® - zedas®asset Solution

Regular monitoring of track conditions is an important prerequisite for ensuring an optimal maintenance strategy.

Together with PC-Soft GmbH **terra®** is offering an integrated solution, which allows precise track surveys with a multi-sensory mobile platform, integrated data evaluation and status assessment. The system supports you in deriving optimised maintenance measures as follows:

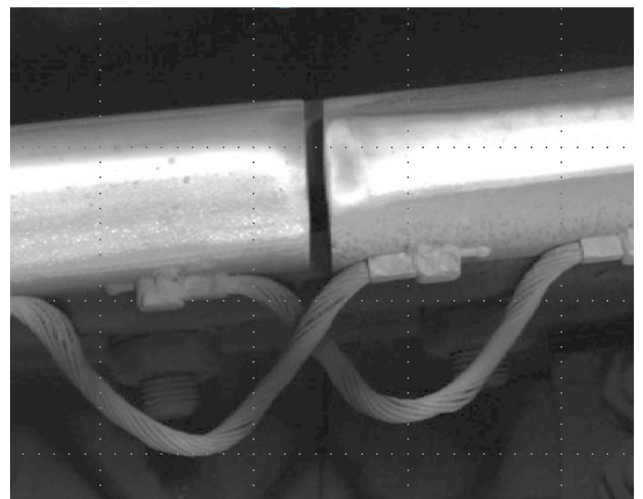
- Make more accurate forecasts about the condition and remaining life time of each piece of infrastructure.
- Plan the necessary maintenance measures and resources more efficiently.
- Increase the availability of your systems through the optimised use of available resources.
- Secure your investment and budget plans using a reliable data base.

### Mobile railway track measurements

Precise surveys of tracks, substructure and infrastructure are carried out using special, high-performance sensors.

**terra®** offers mobile track measurement with a multi-sensor platform in scalable designs.

Thanks to the modular, flexible measurement system, any railroad vehicle can take the recordings, whether using a temporary installation or a permanently operated monitoring system.



## Surveying and evaluation of tracks

The following data are documented:

- Track gauge
- Camber
- Distortion
- Longitudinal gradient
- Track curve
- Position and height of the track axis
- Railhead profiles
- Damage to the railheads and fastenings
- Structure gauge
- Position and height of the overhead contact line
- Structure of ballast and undercarriage
- Track area: Complete 3D documentation



## Data processing and evaluation with zedas®asset

The aim of the solution is to monitor the condition of the railway infrastructure and to manage the efficient use of maintenance resources.

To do this, the required measurements are sent directly from the measurement system to the Asset Management System zedas®asset.



## Advantages of the combined solution terra® - zedas®asset at a glance

The integrated solution made of terra® data acquisition and zedas® maintenance management system with a central information platform offers the following advantages:

- Integrated, automatic measurement analysis, archiving and evaluation
- Accurate, complete log reproduction of all maintenance and building measures
- Legal certainty through consistent documentation,
- Complete data base for planning and prognoses.

